



LOW VOLTAGE LED
LIGHTING



Mercer Group, Inc



Each year, LMT Mercer Group, Inc. adds more lighting options from which customers can choose. Lighting is one way customers can add a unique touch to their decks, fence or railing. We construct our lighting products with only high-grade, commercial components.

pg 3 - Haven

pg 4 - Haven Downward

pg 4 - Haven Scallop Lens

pg 5 - Cape May

pg 6 - Cape May Downward

pg 6 - Cape May Scallop Lens

pg 7 - Neptune

pg 8 - Neptune Downward

pg 8 - Neptune Scallop Lens

pg 9 - Stair/Side Light

pg 9 - Under Rail LED Strip Light

pg 10 - Dome Side Light

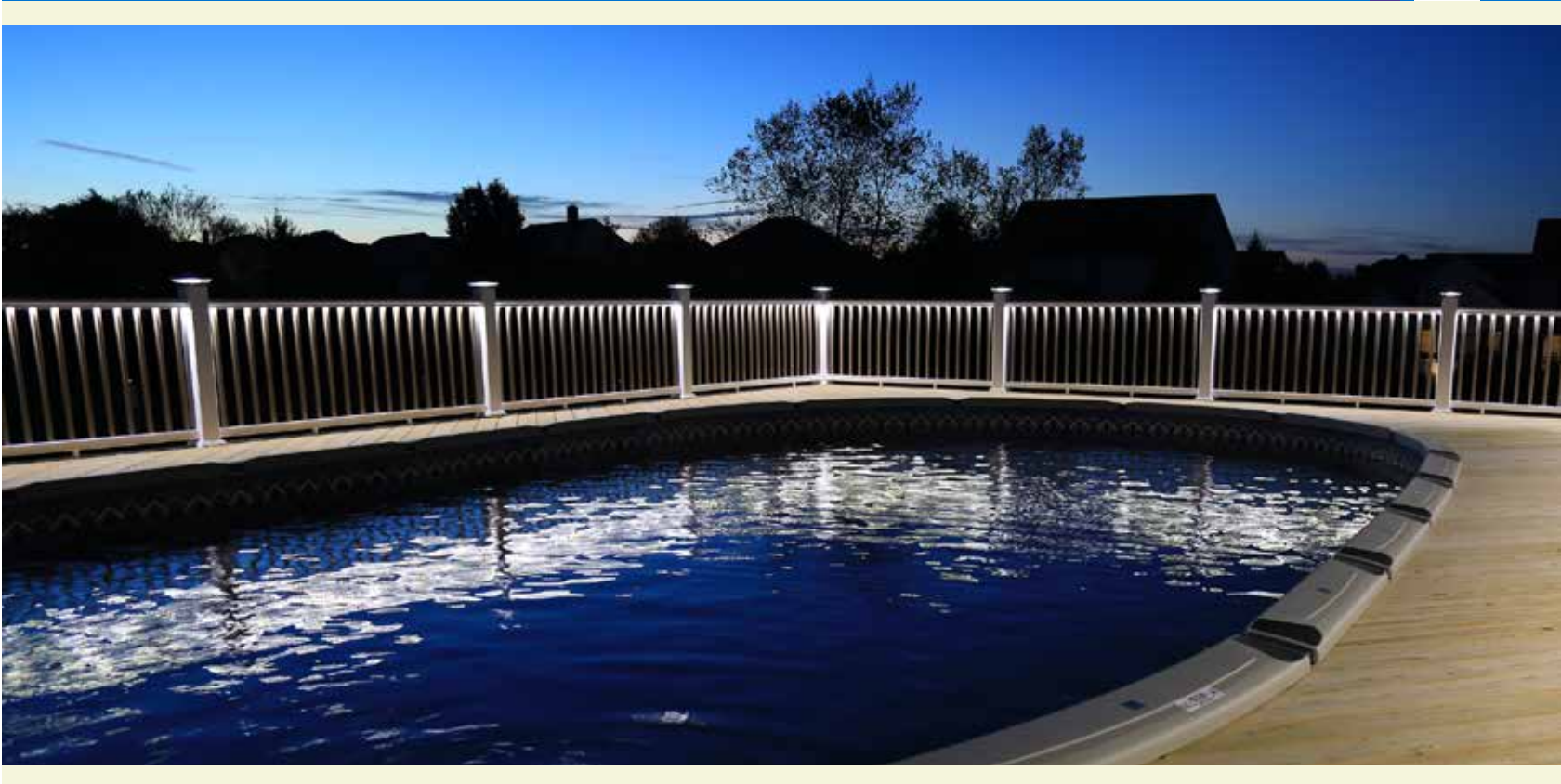
pg 10 - Scalloped Dome Side Light

pg 10 - Flush Deck Light

pg 10 - 3" LED Under Rail Light

pg 11-13 - Wiring and Transformers





Haven

Colors Available

White, Almond, Beige, Khaki

Hammerstone Black, Antique Gray, Antique Copper, Antique Gold, Antique Brown, Patina

Sizes	Product #
• 3-5/8"	#1488-LED
• 4"	#1489-LED
• 4-1/2"	#1565-LED
• 5"	#1511-LED
• 5-5/8"	#1512-LED
• 6"	#1513-LED



Haven Downward Light

Colors Available

White, Almond, Beige, Khaki

Hammerstone Black, Antique Gray, Antique Copper, Antique Gold, Antique Brown, Patina

Sizes	Product #
• 4"	#1644
• 5"	#1648



Haven Scalloped Light

Colors Available

White, Almond, Beige, Khaki

Hammerstone Black, Antique Gray, Antique Copper, Antique Gold, Antique Brown, Patina

Sizes	Product #
• 4"	#1661
• 5"	#1664



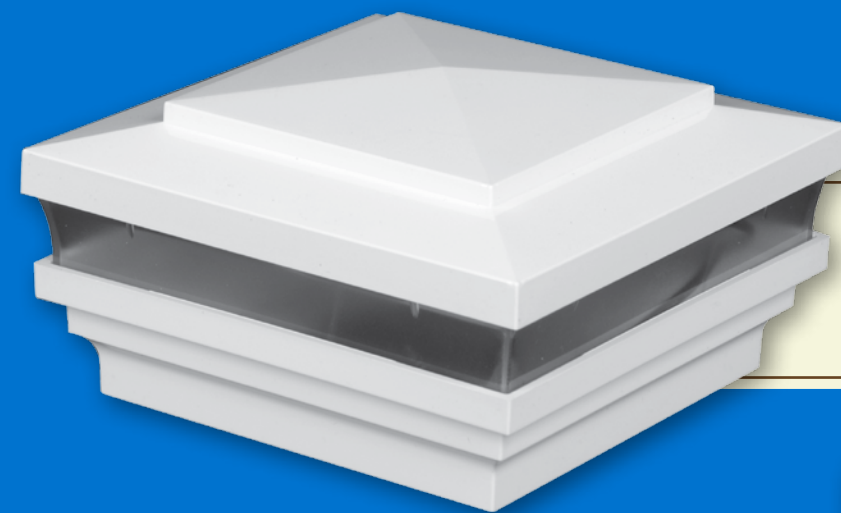
Cape May
Downward Light

Colors Available

White, Almond, Beige, Khaki

Hammerstone Black, Antique Gray, Antique Copper, Antique Gold, Antique Brown, Patina

Sizes	Product #
• 4"	#1645
• 5"	#1647



Cape May

Colors Available

White, Almond, Beige, Khaki

Hammerstone Black, Antique Gray, Antique Copper, Antique Gold, Antique Brown, Patina

Sizes	Product #
• 3-5/8"	#1486-LED
• 4"	#1487-LED
• 4-1/2"	#1561-LED
• 5"	#1508-LED
• 5-5/8"	#1509-LED
• 6"	#1510-LED



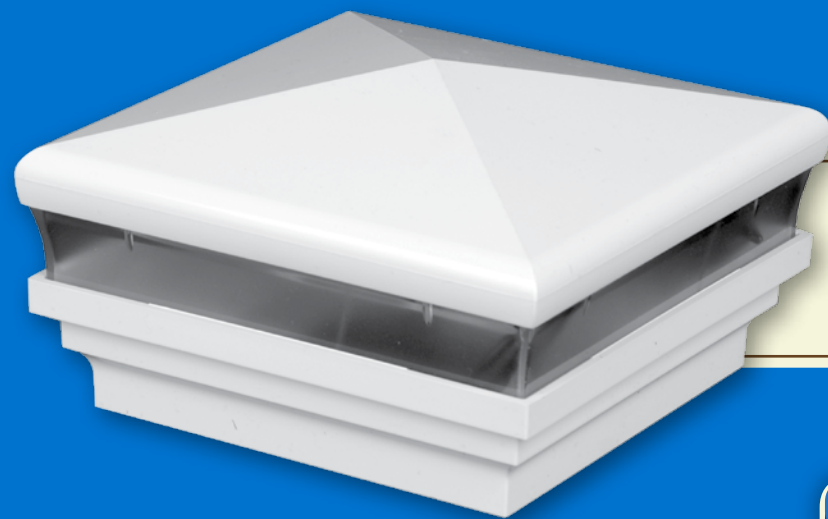
Cape May
Scalloped Light

Colors Available

White, Almond, Beige, Khaki

Hammerstone Black, Antique Gray, Antique Copper, Antique Gold, Antique Brown, Patina

Sizes	Product #
• 4"	#1659
• 5"	#1662



Neptune

Colors Available

White, Almond, Beige, Khaki

Hammer-tone Black, Antique Gray, Antique Copper, Antique Gold, Antique Brown, Patina

Sizes	Product #
• 3-5/8"	#1484-LED
• 4"	#1485-LED
• 4-1/2"	#1563-LED
• 5"	#1505-LED
• 5-5/8"	#1506-LED
• 6"	#1507-LED



Neptune Downward Light

Colors Available

White, Almond, Beige, Khaki

Hammer-tone Black, Antique Gray, Antique Copper, Antique Gold, Antique Brown, Patina

Sizes	Product #
• 4"	#1643
• 5"	#1646



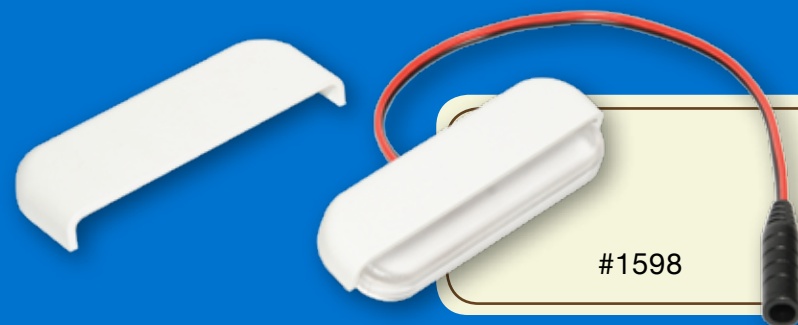
Neptune Scalloped Light

Colors Available

White, Almond, Beige, Khaki

Hammer-tone Black, Antique Gray, Antique Copper, Antique Gold, Antique Brown, Patina

Sizes	Product #
• 4"	#1660
• 5"	#1663

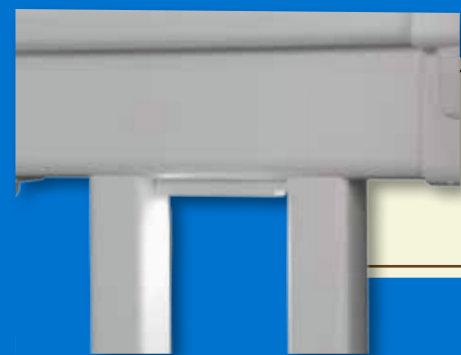


#1598 Stair/Side Light with 2 covers

Colors Available

White, Almond, Beige, Khaki

Hammerstone Black, Antique Gray, Antique Copper, Antique Gold, Antique Brown, Patina



#1649 3" LED Under Rail Light

Colors Available

White, Almond, Beige, Khaki

Hammerstone Black, Antique Gray, Antique Copper, Antique Gold, Antique Brown, Patina



#1599 Dome Side Light

Colors Available

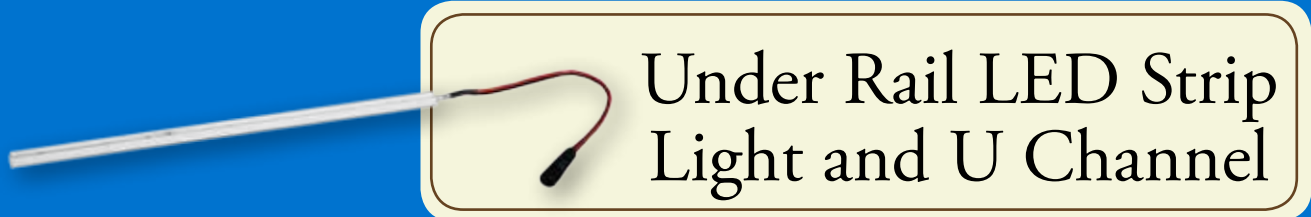
White, Black, Almond, Beige, Khaki, Hammerstone Black, Antique Gray, Antique Copper, Antique Gold, Antique Brown, Patina



#1680 Scalloped Dome Side Light

Colors Available

White, Black, Almond, Beige, Khaki, Hammerstone Black, Antique Gray, Antique Copper, Antique Gold, Antique Brown, Patina

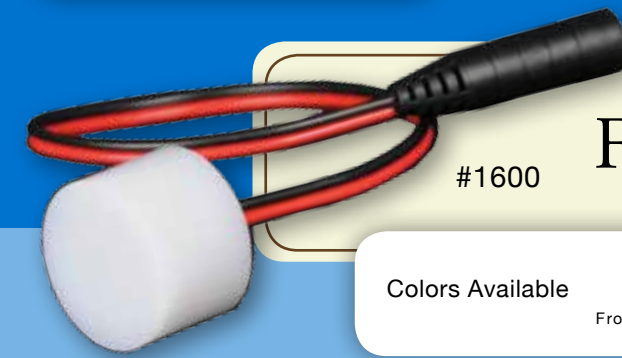


Under Rail LED Strip Light and U Channel

Sizes	Product #
• 68" Light	#1686
• 92" Light	#1687
• 68" U Channel	#1693
• 92" U Channel	#1694

Colors Available

White, Almond, Beige, Khaki



#1600 Flush Deck Light

Colors Available

Frosted Acrylic

WIRING & TRANSFORMERS



#1626

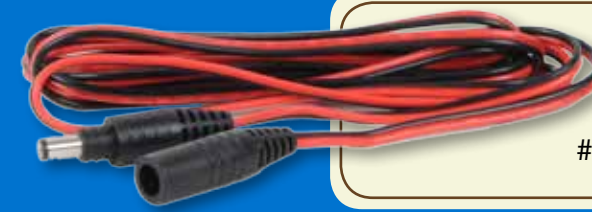
2' Low Voltage LED Harness



#1627

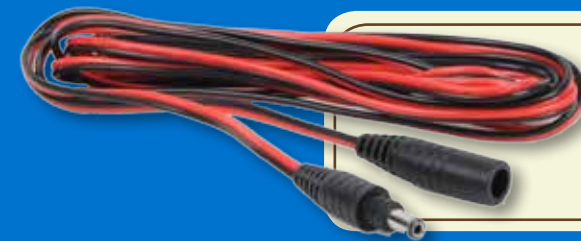
5' Low Voltage LED Harness

WIRING & TRANSFORMERS



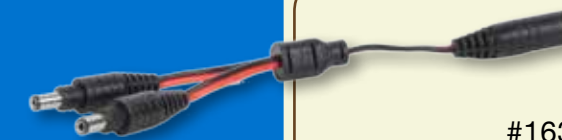
#1628

7' Low Voltage LED Harness



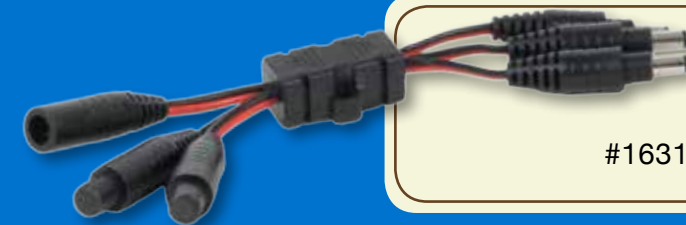
#1629

9' Low Voltage LED Harness



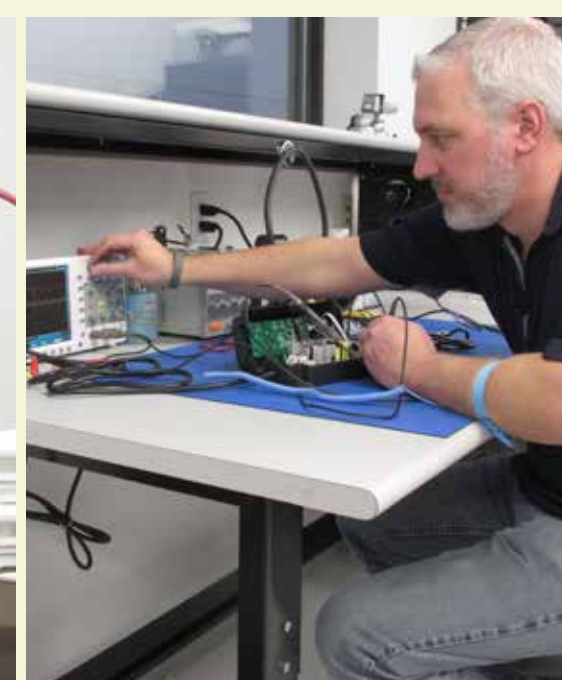
#1630

2 Output Splitter Low Voltage LED



#1631

5 Output Splitter Low Voltage LED



12 Volt/12 Watt Power Supply w/ Photo Eye

#1589 Will power approximately a maximum of 16 lights
Turns on/off by solar sensor



12 Volt/50 Watt Power Supply w/ Photo Eye, Timer & Remote

#1590 Will power approximately a maximum of 65 lights
Turns on/off by either solar sensor, timer or remote



Dimmer for 12 Watt LED Low Voltage Power Supply with Remote

#1669

Unlike most manufacturers of lighting products, LMT has in house electrical engineers that engineer, design, test and add customer support on all lighting products. All LMT products are proudly designed and assembled in the USA.





Mercer Group, Inc

Simple and Easy to Install

- No wires to cut – plug together wiring harness
- Single power supply for all lights
- No need for an electrician or electrical permits

Long Lasting

- Weather resistant connectors and lights
- Long-lasting LED's rated at 50,000 hours
- Housings are durable and UV stable

Highly Energy Efficient

- Low Voltage DC Power Supply
- Dusk to Dawn light sensor
- Available with remote dimmer switch